

CERTIFICATE OF LOCATION OF GOVERNMENT CORNER

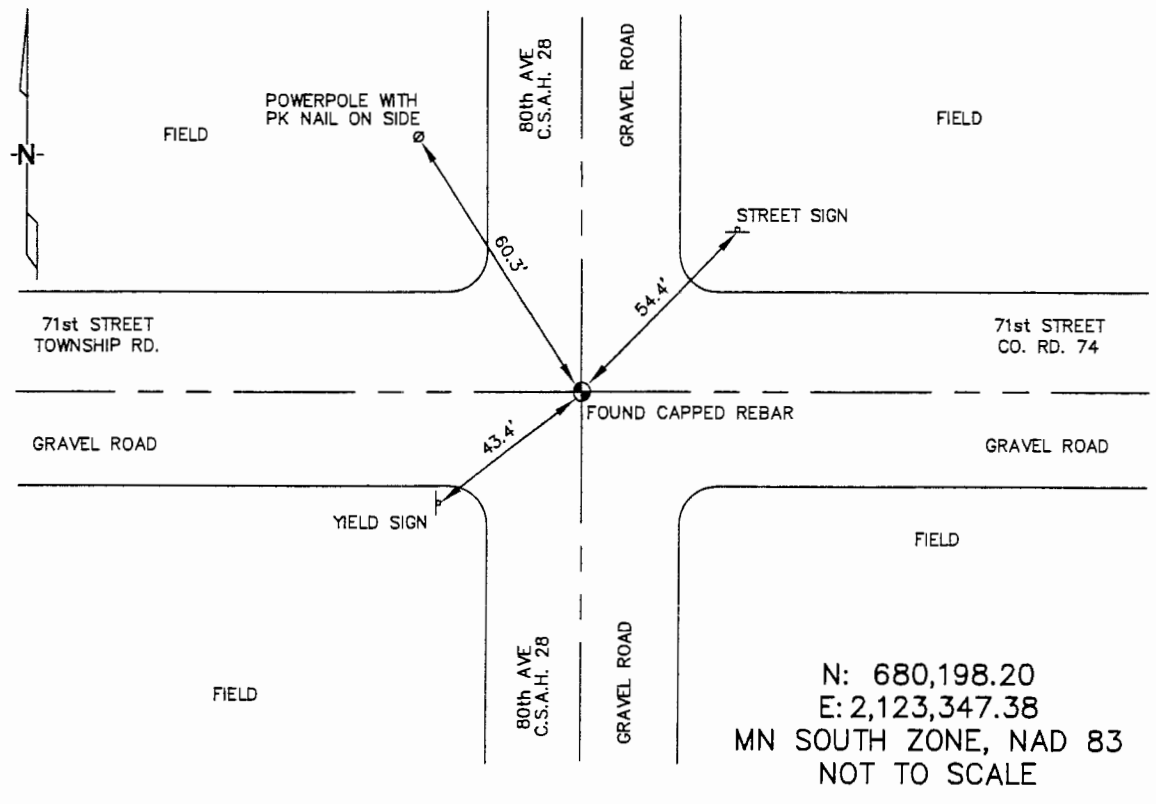
NORTHEAST Corner of Section 32, Township 106N, Range 42W, 5TH P.M.

STATE OF MINNESOTA, County of MURRAY

At the corner location shown on the sketch :

- On 3/21/2006 found A REBAR WITH AN UNREADABLE CAP, AT C/L
INTERSECTION OF GRAVEL ROADS.
- left monument as found, lowered monument, removed monument (explain)
- On _____ set _____

Sketch of reference ties



Statement of evidence relative to this corner location is on back page

I hereby certify that this document and the data contained herein was prepared by me or under my direct supervision.

Thomas V. Jeff 9/21/06
 Thomas V. Jeff Date
 Registration No. 44563
 Land Surveyor, Professional Engineer
 County Surveyor, County Engineer

OFFICE OF THE COUNTY RECORDER
County of _____

I hereby certify that this document was filed in the Co. Recorders office at _____ M. on the day of _____ A.D., 20
 County Recorder Jenna V. Johnson
 By _____, Deputy
 DOCUMENT NO. _____

STATEMENT OF EVIDENCE:

NORTHEAST CORNER, SECTION 32, T. 106 N., R. 42 W.,
MURRAY COUNTY, MINNESOTA

- 1866 J.W. Bishop, US. Deputy Surveyor, monumented corner.
- 3/21/2006 Ulteig Engineers, Inc., Survey Crew, Dennis Lavallie Party Chief,
found a rebar with an unreadable cap at the C/L intersection of
gravel roads.
Ties: NE-54.4' to steel post, Street Sign;
SW-43.4' to steel post, Yield Sign;
NW-60.3' to PK nail in power pole.